
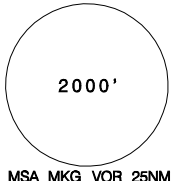
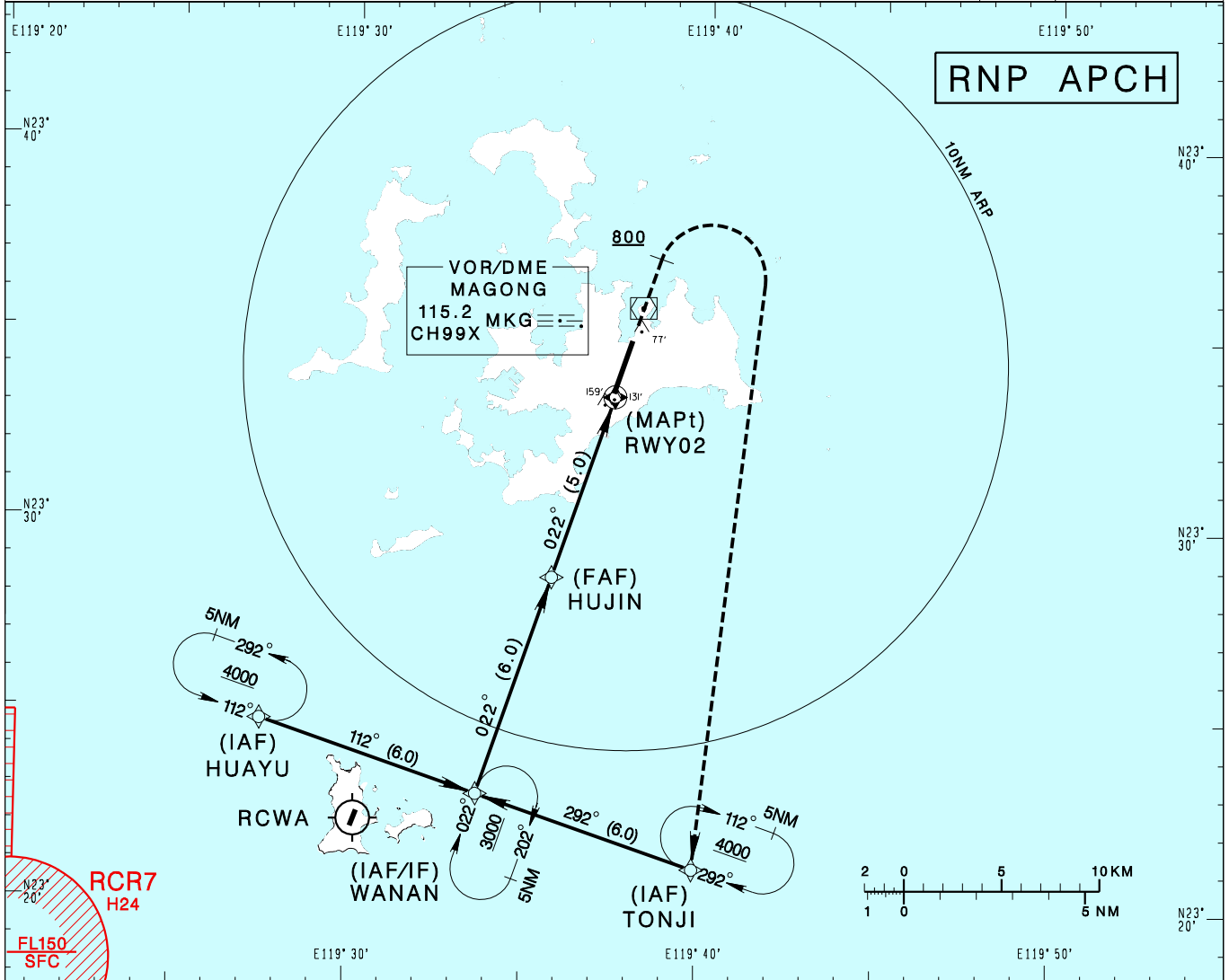


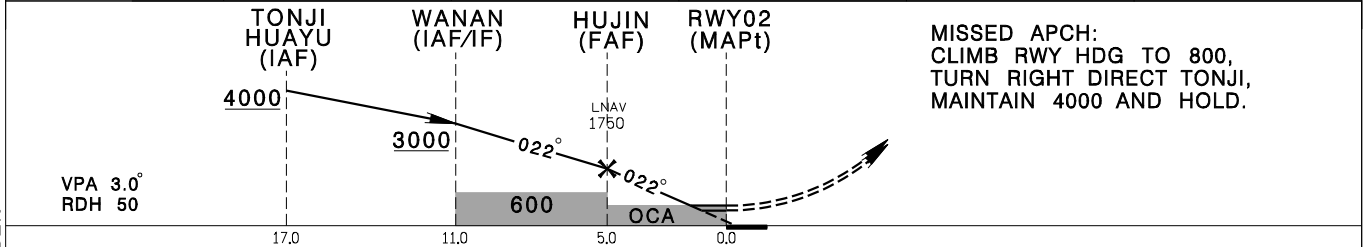
澎湖機場
PENGHU AD

RCQC
RNP RWY02

KAOSIUNG APP 128.1 234.8	MAGONG TWR 118.3 236.6	ATIS 127.05	 
Apt Elev: 103' Rwy02 THR Elev: 103' Trans Level: FL130 Trans Alt: 11,000'			
BEARINGS ARE MAGNETIC; DISTANCES ARE NAUTICAL MILES; ELEVATIONS, HEIGHTS IN FEET			



DIST (NM) to THR 02	5	4	3	2	1
DIST (NM) to Next WPT	HUJIN	4	3	2	1
ADVISORY ALT	1750	1430	1110	790	480



CATEGORY		A	B	C	D
LNAV/VNAV	STRAIGHT IN	410/ 800 RVR750 307	410/ 800 RVR750 307	410/ 800 RVR750 307	410/ 800 RVR750 307
	STRAIGHT IN (ALS OUT)	410/ 1400 RVR1400 307	410/ 1400 RVR1400 307	410/ 1400 RVR1400 307	410/ 1400 RVR1400 307
LNAV	STRAIGHT IN	430/ 1200 RVR1200 327	430/1600 327	430/1600 327	430/1600 327
	STRAIGHT IN (ALS OUT)	430/1600 327	430/1600 327	430/1600 327	430/1600 327

NOTE
1. CIVIL AIRCRAFT USE EAST TRAFFIC CIRCUIT.
2. BARO-VNAV NOT AUTHORIZED BELOW 0°C.
3. CAUTION CLOSE-IN OBSTACLES (TREES, POLES & WATER TOWER):
159FT MSL, 794m & 131FT MSL, 292m SOUTH OF THR02; 77FT MSL, 436m NORTH OF THR20.

CHANGES: NEW PAGE NUMBER